



October 2021

Student Voting Rates for Washington State University

2020 NSLVE Campus Report

October 2021

Dear Colleagues:

We are pleased to send this tailored report containing your students' voting rates for 2020. This report contains three years of relevant topline data: 2016, 2018, and 2020. As always, we disaggregate the data so you can better identify and address gaps in participation.

College and university students participated in record-breaking numbers in the 2020 election. In 2016, the Average Institutional Voting Rate was 53%. This year, it jumped to 66%. We encourage you to review Democracy Counts 2020, our most recent national report.

As in past years, we urge you to share this report widely and strategically, particularly with faculty who, in 2020, were often the most consistent communicators with students about ever-changing voting conditions and deadlines. We also urge you to review our recommendations for engaging elections to cultivate a robust and healthy campus climate for political engagement, discourse, equity, and participation: Election Imperatives (2019) and the more recent Election Imperatives: A Time of Physical Distancing and Social Action. Since "pervasive political discussions" and attentiveness to the campus culture around speech and academic freedom are among our top recommendations, we direct you to our discussion guides on talking about your NSLVE report, on free speech and inclusion, and on hot topics, our Making Sense of ... guides.

Finally, we always encourage you to work with us. Help us help you get better data by reaching out. Email IDHE@Tufts.edu for more information. And as always, watch your inbox for our periodic newsletter, IDHE Update, for announcements about upcoming releases and new resources.

Congratulations on engaging your students in the 2020 election. Remember, student political learning is a year-round objective. Elections may be episodic, but student political engagement should not be.

All the Best,
IDHE Team



(Top Row from left) Duy Trinh, Program Administrator; Adam Gismondi, Director of Impact; Dave Brinker, Senior Researcher;
(Bottom Row from left) Nancy Thomas, Director; Norma López, Postdoctoral Scholar; Prabhat Gautam, Data Manager.

We also want to acknowledge and thank **Syed Golam Mohaimen, M.S. student in Data Science at Tufts University** for his contributions toward the creation of these reports.

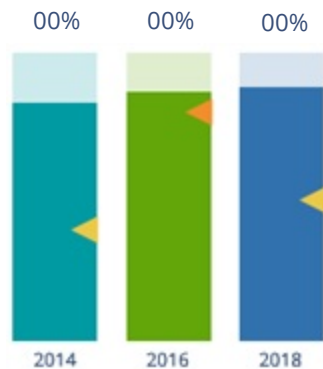
In This Report

This report presents data on student voter participation rates for your campus. The topline counts on page 5 tells you how many students voted, but we encourage you to look carefully at the data on subsequent pages to learn who voted. Data are presented in the form of vessel charts, overlapping donut charts, and tables.

	2014			2018			2014-2018 Change (p.p.)
	Enrolled	Voted	Rate (%)	Enrolled	Voted	Rate (%)	
Asian	-	-	-	-	-	-	-
American Indian/ Alaska Native	-	-	-	-	-	-	-
Black	-	-	-	-	-	-	-
Hispanic	-	-	-	-	-	-	-

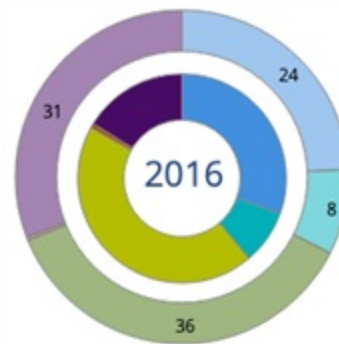
Tables

The tables show, on the left-side columns, the numbers of students and the rates from 2016, 2018, and 2020. On the left-side, percentage point (p.p.) changes between 2016 and 2020. A red down arrow indicates a decrease, a green up arrow indicates an increase, and a yellow arrow pointing to the right indicates no change. "-" in these tables indicates that the data is unavailable/missing, or is available for 10 or less students.



Vessel Chart

This chart shows rates out of 100%, with arrows to the right of each bar representing relevant national averages (medians), which you can find in IDHE's national report Democracy Counts 2020.



Overlapping Donut Chart

This chart is used to show the breakdown of vote method utilization (page 10), with the outer ring showing your campus method utilization and the inner ring showing the national breakdown. These are described in percentages.

Voting, Registration and Yield Rates

YOUR INSTITUTION

72.8%

2020 Voting Rate

+21.2

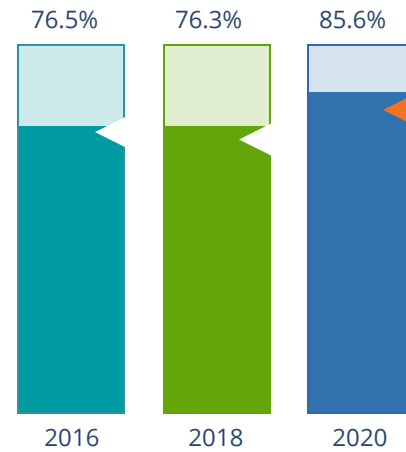
Change From 2016

ALL INSTITUTIONS

66%

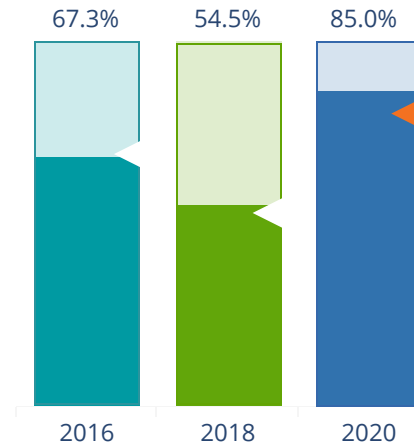
2020 Voting Rate

REGISTRATION RATE



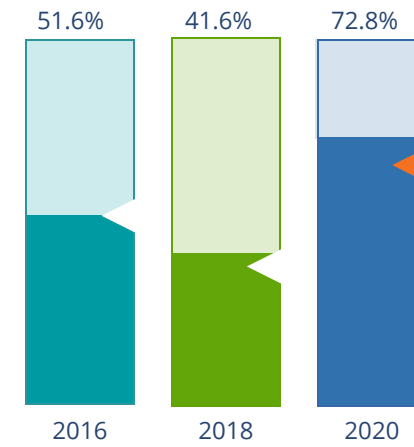
The **Registration Rate** is the percent of your voting-eligible students who registered to vote.

VOTING RATE OF REGISTERED STUDENTS



The **Voting Rate of Registered Students** is the percent of registered students who voted on Election Day. We often refer to this as the “yield” rate.

VOTING RATE



The **Voting Rate** is the percentage of eligible students who voted on Election Day. The voting rate is also the product of the registration and yield rates.

Looking Closer

Voting and Registration Rates

	2016	2018	2020	2016-2020 Change (p.p.)
Total Student Enrollment	29,582	30,701	30,585	↑ 1,004
(Age under 18/Unknown)	-	-	-	-
(IPEDS estimated non-resident aliens)	2,102	2,183	1,882	↓ -219
(FERPA records blocked)	139	247	270	↑ 131
(Non-Degree Seeking Students)	-	12	-	-
Total eligible voters	27,340	28,259	28,430	↑ 1,090
Number of students who registered	20,928	21,555	24,345	↑ 3,417
Number of students who voted	14,095	11,754	20,690	↑ 6,595
Registration Rate %	77	76	86	↑ 9
Voting Rate of Registered Students %	67	55	85	↑ 18
Voting Rate %	52	42	73	↑ 21

This page provides the numbers we used to calculate your voting, registration, and yield rates. The sub-categories under total student enrollment are the adjustments that we make to account for students who are ineligible to vote due to age or citizenship status. We also exclude, when correctly flagged, students who are not pursuing degrees.

We use IPEDS-derived estimates of NRAs when institutions do not submit non-resident alien status data to NSC, or we cannot verify the accuracy of the reported counts. This estimate is given by "IPEDS estimated non-resident aliens" on this page. If you believe the number of international students reported on this report is incorrect, you can manually adjust your institution's voting rates by using our recalculation tool. <https://id-he.tufts.edu/nslve/nslve-recalculation-tool>.

By Institution Types

2016 Voting Rate for All Institutions

53%

HIGH
82%

LOW
13%

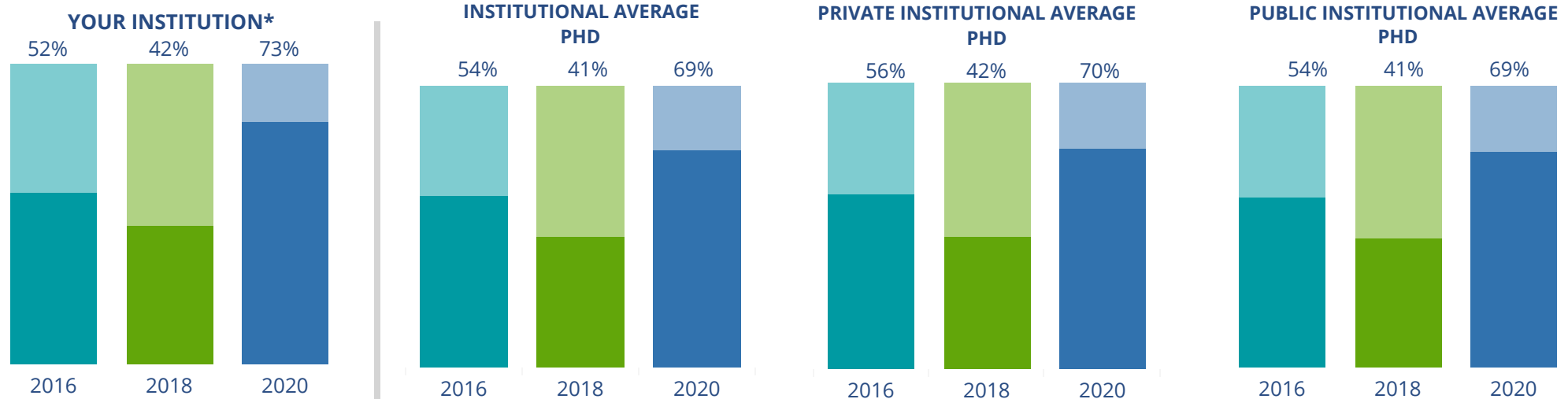
2020 Voting Rate for All Institutions

66%

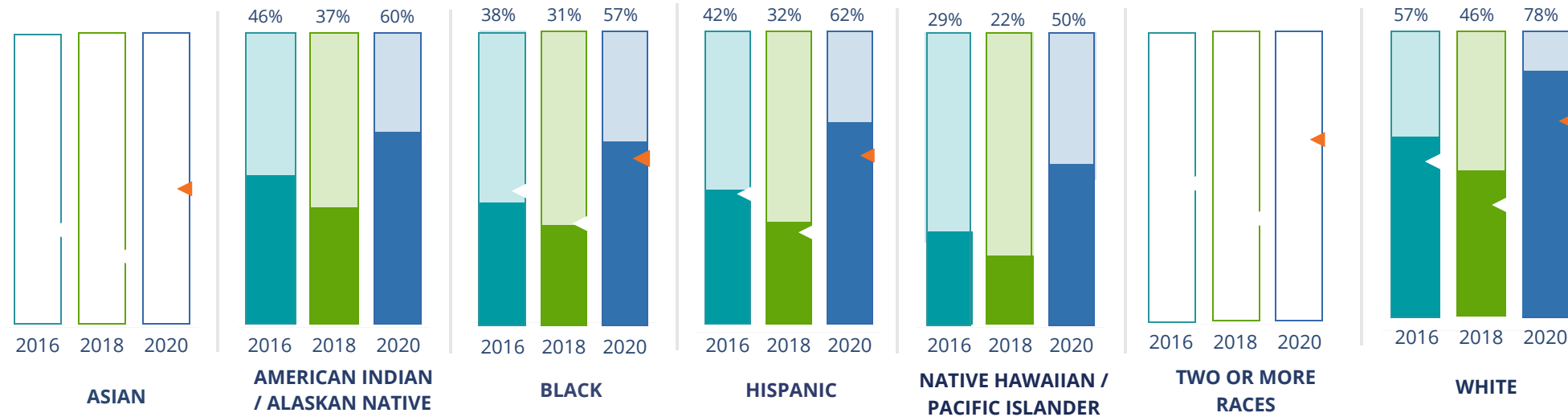
HIGH
89%

LOW
19%

These are estimated voting rates of your institution compared to the average voting rates of similar institutions in NSLVE. *"Your Institution" chart is presented at a different scale.



By Race / Ethnicity



These are estimated voting rates for race / ethnicity groups. These classifications are provided by campuses and are obtained following race reporting procedures* defined by the National Center for Education Statistics of the Institute of Education Sciences (IES). Please see our FAQ for more detail on why we cannot report national benchmark for some of the demographic groups:

<https://tufts.app.box.com/v/idhe-nsive-report-faq>

If you notice unavailable/missing data in this page, it could mean any of the following for your institution: (i) does not report this data; (ii) did not provide this data in past years; (iii) does not separately submit data for one or more of the demographic groups, or (iv) the data is reported for 10 or fewer students.

* <https://nces.ed.gov/ipeds/report-your-data/race-ethnicity-collecting-data-for-reporting-purposes>

Looking Closer

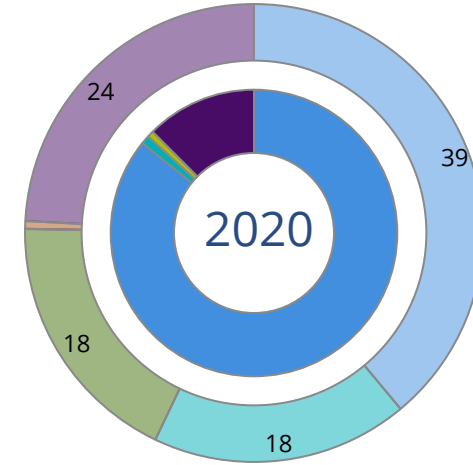
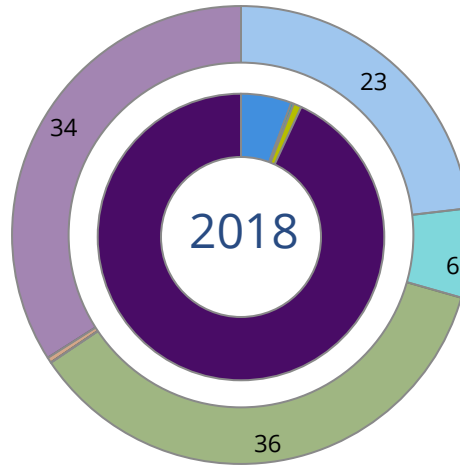
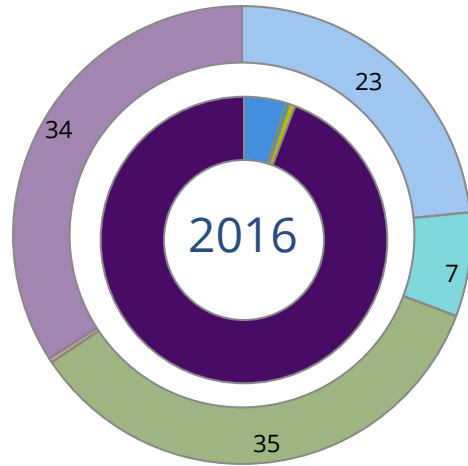
By Race/Ethnicity

This page provides the numbers we used to calculate race / ethnicity group voting rates. We include the counts of students and the change in rates between the two most recent comparable election years. If you notice unavailable/missing data in this page, it could mean any of the following for your institution: (i) does not report this data; (ii) did not provide this data in past years; (iii) does not separately submit data for one or more of the demographic groups, or (iv) the data is reported for 10 or fewer students.

	2016			2018			2020			2016-2020 Change (p.p)
	Enrolled	Voted	Rate	Enrolled	Voted	Rate	Enrolled	Voted	Rate	
Asian	-	-	-	-	-	-	-	-	-	-
American Indian/ Alaska Native	220	102	46	178	65	37	148	88	59	↑ 13
Black	909	344	38	961	296	31	903	513	57	↑ 19
Hispanic	3,762	1,567	42	4,220	1,330	32	4,539	2,827	62	↑ 21
Native Hawaiian/ Pacific Islander	1,947	563	29	2,313	502	22	2,441	1,222	50	↑ 21
2 or More Races	-	-	-	-	-	-	-	-	-	-
White	17,199	9,763	57	17,920	8,264	46	18,043	13,992	78	↑ 21
Race Unknown	5,380	1,756	33	4,832	1,297	27	4,222	2,048	49	↑ 16

By Voting Method

■ Not-In-Person
 ■ Early Vote
 ■ In-Person
 ■ Other
 ■ Provisional
 ■ Unknown



	2016		2018		2020		2016-2020	
	Voted	Rate	Voted	Rate	Voted	Rate	Change (p.p.)	
Early Vote	51	0	40	0	213	1	1	↑
In-Person on Election Day	101	1	111	1	154	1	0	→
Not-In-Person	669	5	665	6	17,761	86	81	↑
Other	-	-	-	-	-	-	-	
Provisional	-	-	-	-	-	-	-	
Voting Method Unknown	13,272	94	10,937	93	2,557	13	-82	↓

These are estimated rates for vote method utilization, the number of students utilizing each method, and the percent of students utilizing each method. Not all U.S. states provide information on vote method; voting method for voter files from these states are classified "Voting Method Unknown." For a list of these states, see our FAQ. <https://idhe.tufts.edu/nsive/nsive-faq#CampusReports>

By Age Group

	2016	2018	2020
18-21	45%	35%	70%
22-24	47%	37%	67%
25-29	48%	41%	63%
30-39	55%	48%	65%
40-49	65%	60%	74%
50+	78%	73%	85%

Voting is habit-forming and young voters will usually continue as voters in subsequent elections.

Also, young voters are more likely to be contacted by campaigns and are visible, and therefore significant, to elected officials. While in the past, we have seen voting rates increase across age groups, in recent cycles, the most significant increases have been among first-time and the youngest voters. Some colleges serve primarily young students, traditionally viewed as students in the 18-21 or 22-24 categories here. Others have much higher numbers of enrolled older undergraduate or graduate students.

Looking Closer

By Age Group

Here, we provide the numbers of students in each age category and the voting rates for each group. These are based on the student's age on the day of the election, as calculated by the National Student Clearinghouse using data from student enrollment records.

	2016			2018			2020			2016-2020	
	Enrolled	Voted	Rate	Enrolled	Voted	Rate	Enrolled	Voted	Rate	Change (p.p)	
18-21	15,358	6,910	45	16,337	5,693	35	15,960	11,209	70	↑ 25	
22-24	5,982	2,800	47	6,002	2,249	37	5,939	3,954	67	↑ 20	
25-29	3,816	1,849	48	3,883	1,577	41	3,961	2,492	63	↑ 14	
30-39	2,915	1,613	55	2,872	1,392	48	3,081	1,996	65	↑ 9	
40-49	995	649	65	1,004	604	60	1,012	746	74	↑ 8	
50+	351	274	78	326	239	73	343	293	85	↑ 7	

Looking Closer

By Sex

	2016			2018			2020			2016-2020	
	Enrolled	Voted	Rate	Enrolled	Voted	Rate	Enrolled	Voted	Rate	Change (p.p)	
Female	15,275	7,842	51	16,071	6,654	41	16,440	11,845	72	↑	21
Male	14,142	6,253	44	14,353	5,100	36	13,856	8,845	64	↑	20

These are estimated voting rates for sex groups and the numbers we used to calculate their voting rates. These classifications are provided by campuses and are obtained following the reporting procedures defined by the National Center for Education Statistics (NCES) of the Institute of Education Sciences (IES). Presently, NCES requires institutions to report students as “Male” or “Female” only.*

If you notice missing data in this page, it could mean any of the following for your institution: (i) does not report this data; (ii) did not provide this data in past years; (iii) does not separately submit data for one or more of the demographic groups, or (iv) the data is reported for 10 or fewer students.

*<https://surveys.nces.ed.gov/ipeds/public/survey-materials/faq?faqid=11>

Looking Closer

By Education Level / Undergraduate Class Year

	2016			2018			2020			2016-2020	
	Enrolled	Voted	Rate (%)	Enrolled	Voted	Rate (%)	Enrolled	Voted	Rate (%)	Change (p.p)	
EDUCATION LEVEL											
Undergraduate	23,824	11,097	47	24,886	9,265	37	24,224	16,783	69	↑	23
Graduate	4,938	2,604	53	5,031	2,228	44	5,491	3,518	64	↑	11
Class Unknown	655	394	60	507	261	51	581	389	67	↑	7
CLASS YEAR											
First Year	5,474	39	2,135	5,556	29	1,585	4,511	68	3,061	↑	29
Second Year	4,550	43	1,957	4,568	35	1,593	4,724	67	3,149	↑	24
Upper Level	13,457	50	6,775	14,440	41	5,904	14,727	70	10,360	↑	20
ENROLLMENT STATUS											
Full-time	25,359	11,816	47	26,496	9,839	37	26,279	17,898	68	↑	22
Part-time	4,058	2,279	56	3,928	1,915	49	4,017	2,792	70	↑	13

These are estimated voting rates by Education Level (undergraduate/graduate), Class Year, and Enrollment Status (full-time/part-time), and the numbers we used to calculate these rates.

If you notice missing data in this page, it could mean any of the following for your institution: (i) does not report this data; (ii) did not provide this data in past years; (iii) does not separately submit data for one or more of the demographic groups, or (iv) the data is reported for 10 or fewer students.

By Field of Study

FIELDS	2016			2018			2020			2016-2020	
	Enrolled	Voted	Rate	Enrolled	Voted	Rate	Enrolled	Voted	Rate	Change (p.p)	
Architecture	280	111	40	347	90	26	299	185	62	↑ 22	
Area, Ethnic, Cultural, and Gender Studies	67	39	58	42	23	55	27	16	59	↑ 1	
Biological and Biomedical Sciences	2,174	1,085	50	2,321	892	38	2,356	1,694	72	↑ 22	
Business, Management, and Marketing	5,408	2,358	44	5,546	1,947	35	5,956	3,861	65	↑ 21	
Communication and Journalism	1,611	830	52	1,812	789	44	1,855	1,372	74	↑ 22	
Computer and Information Sciences	858	370	43	1,084	366	34	1,176	688	59	↑ 15	
Education	1,171	668	57	1,183	536	45	1,166	887	76	↑ 19	

These are estimated voting rates by field of study, and the numbers we used to calculate the field of study rates. For an explanation of CIP codes, please see our FAQ.* There are roughly 8,000 fields of study among U.S. colleges and universities, so we provide rates for condensed categories.

*<https://tufts.app.box.com/v/idhe-nslve-report-faq>

By Field of Study

FIELDS	2016			2018			2020			2016-2020	
	Enrolled	Voted	Rate	Enrolled	Voted	Rate	Enrolled	Voted	Rate	Change (p.p)	
Engineering and Engineering Technologies	3,708	1,543	42	3,732	1,322	35	3,685	2,302	62	↑	21
English Language and Literature	311	193	62	339	175	52	388	296	76	↑	14
Family and Consumer/Human Sciences	900	451	50	883	322	36	764	551	72	↑	22
Foreign Languages, Literatures, and Lingui..	78	38	49	99	34	34	76	57	75	↑	26
Health Professions	3,314	1,713	52	3,600	1,421	39	3,423	2,451	72	↑	20
History	246	161	65	252	141	56	279	219	78	↑	13
Legal Professions and Studies	11	-	-	49	16	33	29	18	62		-
Liberal Arts and Sciences, and Humanities	282	154	55	304	135	44	226	149	66	↑	11
Mathematics and Statistics	259	119	46	264	91	34	276	165	60	↑	14
Multi/Interdisciplinary Studies	114	63	55	153	65	42	228	147	64	↑	9
Natural Resources and Conservation	168	106	63	144	75	52	184	124	67	↑	4
Parks, Recreation, Leisure, and Fitness Stu..	859	324	38	804	232	29	813	549	68	↑	30
Philosophy and Religious Studies	44	21	48	65	33	51	46	37	80	↑	33
Physical Sciences	695	371	53	826	360	44	801	582	73	↑	19

By Field of Study

FIELDS	2016			2018			2020			2016-2020 Change (p.p)
	Enrolled	Voted	Rate	Enrolled	Voted	Rate	Enrolled	Voted	Rate	
Psychology	1,439	682	47	1,458	565	39	1,652	1,167	71	↑ 23
Public Administration and Social Service Professions	68	47	69	56	41	73	36	33	92	↑ 23
Social Sciences	2,458	1,185	48	2,362	1,001	42	2,538	1,747	69	↑ 21
Visual and Performing Arts	325	161	50	339	117	35	335	245	73	↑ 24
Unknown	678	390	58	517	262	51	606	410	68	↑ 10

About This Report

Thank you for participating in the National Study of Learning, Voting, and Engagement.

Since NSLVE's launch in 2013, nearly 1,200 colleges and universities have signed up to receive their voting rates for the 2012, 2014, 2016, 2018, and 2020 federal elections.

Along with others, your institution's participation in this study has allowed us to build a robust database of over 50 million college student records, about 10 million for each election year, that serve as a foundation for innovative research on college student political learning and engagement in democracy.

NSLVE is a signature initiative of the Institute for Democracy and Higher Education (IDHE) at Tufts University's Jonathan M. Tisch College of Civic Life. The mission of IDHE is to shift college and university priorities and culture to advance political learning, agency, and equity. We achieve our mission through research, resource development, technical assistance, and advocacy.

About the Data

The voter registration and voting rates in this report reflect the percentage of your institution's students who were eligible to vote and who actually voted in the 2016, 2018, and 2020 elections.

These results are based on enrollment records your institution submitted to the National Student Clearinghouse (NSC) and publicly available voting files collected by L2 Political.

Enrollment lists are adjusted by deducting students under age 18 (at the time of the election), people identified as non-degree seeking and those identified by campuses as "nonresident aliens" (NRAs) (the federal government's category for mostly international students). Unfortunately, not all campuses report NRAs to NSC. For those campuses, we use IPEDS to calculate the number of NRA students on each campus and adjust NSC enrollment numbers to estimate the number of students to remove. We also quality check NRA removals by verifying that there is little to no discrepancy between the number of international students reported by the campus to IPEDS and to NSC. We cannot adjust subgroup analyses absent identification of NRAs verified by the process above. We welcome closer partnerships with individual colleges and universities to provide more accurate rates. For more on the data and the matching process, see our FAQ on Campus Reports.

Washington State University

Thank you for the work you do to improve your students' political learning and engagement. We hope that you find your NSLVE report useful. For up-to-date news on NSLVE data, resources, and to sign up for our newsletter visit: <https://idhe.tufts.edu>.

References: IDHE encourages report recipients to share this report as broadly as possible, including posting it on the college or university's website. When doing so, please use the following citation: Institute for Democracy & Higher Education: National Study of Learning, Voting and Engagement. (2021). 2016, 2018, and 2020 report for _____ [name of institution]. Medford, MA.



Barnum Hall
163 Packard Ave.
Medford, MA 02155

tischcollege@tufts.edu
617.627.3453



Institute for Democracy & Higher Education:
National Study of Learning, Voting, and Engagement
Barnum Hall, Medford, MA 02155

Follow Us on Twitter: @TuftsIDHE
NSLVE@tufts.edu
617.627.0620